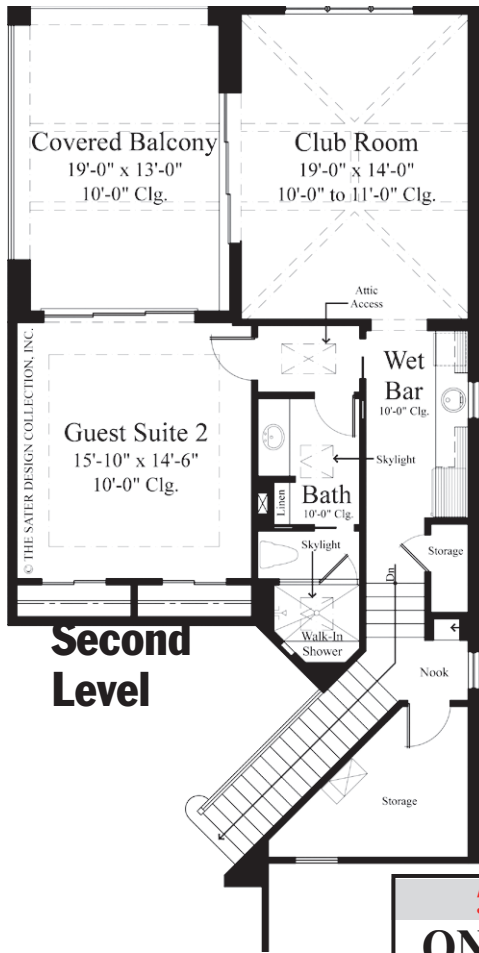


# HOUSE OF THE WEEK

CONTINUED FROM PAGE 16

Design details for plan  
**930-475**

- Bedrooms: 5
- Baths: 5.5
- Total Living Area: 6,136 sq. ft.
- Dimensions: 89' 8" x 130' 4"
- Framing: Block



### ORDER INFORMATION

To build this home, you can order a complete set of construction documents by calling toll-free (866) 228-0193 or visiting <https://www.eplans.com/collection/house-of-the-week>. Enter the design number to locate the plan and view more images and details. At <https://www.eplans.com/collection/house-of-the-week>, you can view previously featured plans, browse other specialty collections, or use our search filters to help you find exactly what you want from over 28,000 home designs. Most plans can be customized to suit your lifestyle.

### River Front Real Estate Auction

**Tuesday, September 24th at 5:00 PM**  
**26 Anns Drive**  
**Vienna, WV**

Want to own a river front property with a boat dock? Here is your opportunity. Beautiful A-Frame featuring cathedral ceilings, updated kitchen with granite countertops & breakfast bar, and 2nd story loft suite with full bath located on a dead-end street. Enjoy the outdoors on the wrap-around deck with scenic views or walk down to riverfront lot for a peaceful setting. This home is ready for you!

**Subject #1:**  
**1,992 SF A-Frame Home**

**Subject #2:**  
**River Front Lot w/ R-O-W**



**5 BR 2 BA Ranch Project Home**  
**ONLINE REAL ESTATE AUCTION**  
**Starting Bid only \$2,500!**  
**Bidding closes Tuesday,**  
**September 17th at 6:00 PM**

**12 Pauley Heights Road**  
**Knollwood Subdivision**  
**Charleston, WV**



- Full mostly finished Basement
- Gas forced air heating/central A/C
- Large family room with Fireplace in basement
- 2 car attached garage
- Storage Building
- All contents convey

*RE Terms: 10% down payment made day of auction w/balance due at closing w/in 60 days. 10% BP.*

**JOE R. PYLE COMPLETE AUCTION & REALTY SERVICE**  
Joe Pyle, Broker WV212  
Alan Heldreth WV2224  
5546 Benedum Drive, Shinnston, WV  
(888) 875-1599

[www.joerpyleauctions.com](http://www.joerpyleauctions.com)

## RENOVATION

FROM PAGE 14H

Venting warm and often moist air into an enclosed space can cause mold and wood rot. The air needs to be vented outside. Also, sealing vents at the roof line often requires professional attention, inspectors say.

### Failing to keep documented records

Homeowners should keep detailed records of the materials, receipts, and permits to all the improvements and maintenance projects they do, whether DIY or professional. "Make sure that what you brag about [in listing descriptions] is documented," Corey B. Stern, a partner at Chitkowski Law Offices, a real estate law firm in Lisle, Ill., told the Tribune. "Make sure that what you brag about is documented. If the house has been on and off the market, look at the prior listing sheets and see if there's new work."

Source: National Association of Realtors

### A-Frame Home Offers:

- 3 Bedrooms, 3 Full Bath
- Open Concept
- ADT Security System
- (2) Central A/C Units & (2) Gas Furnaces
- 1,400 SF Garage Space w/ Flood Block Protection & 12 Ft. Ceilings
- Additional 3 Car Detached Garage with Concrete Floors

### River Front Lot Offers:

- 10 Ft. Right-of-Way to River (Survey Available Upon Request)
- 33x32.2x33x30 Lot Dimensions
- 30 Ft. Of River Frontage
- Boat Dock Conveyed w/ Property

Subjects will be offered individually and as a whole, with highest bid total determining final sale.

*RE Terms: 10% down payment made day of auction w/balance due at closing w/in 60 days. 10% BP.*

**JOE R. PYLE COMPLETE AUCTION & REALTY SERVICE**  
Joe Pyle, Broker WV212  
Alan Heldreth WV2224  
5546 Benedum Drive, Shinnston, WV  
(888) 875-1599

[www.joerpyleauctions.com](http://www.joerpyleauctions.com)